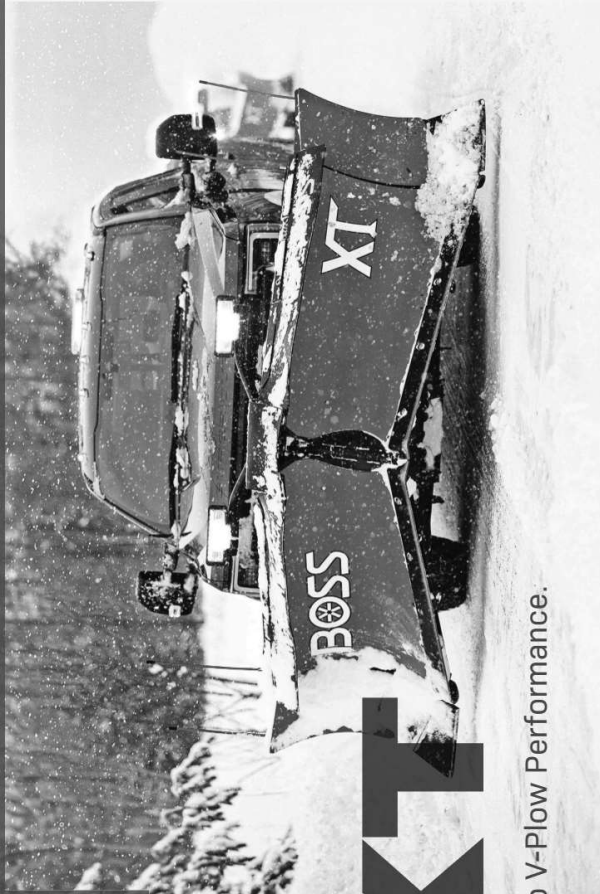




LEARN MORE
ABOUT TRIPPING



XT

Full-Trip V-Plow Performance.

Standard Features

- SmartLight™ 3 LED Headlight System
- Reinforced Moldboard
- Heavy-Duty Push Frame and Center Section
- Full Moldboard Trip Design
- ½" x 6" AR450 Cutting Edge
- Patented Snow Catcher
- SmartLock® Cylinders
- Simple Hydraulics
- Moldboard Options

Optional Accessories

- Snow Deflector
- Cast-Iron Plow Shoes
- Caster Wheels
- BOSS Joystick Controller
- Wing Extensions
- Formed Urethane Cutting Edges
- Backdrag Edge
- Turf Defender

Product Specs

8'2" XT

Steel | Poly | Stainless

- Straight-Blade Width | Curb Guard Width* 98" | 102"
- V-Position Blade Width | Curb Guard Width* 88" | 90"
- Scoop-Position Blade Width | Curb Guard Width* 81" | 93"
- 30" center; 38" ends Blade Height
- 785 lbs* | 795 lbs* | 823 lbs* Plow Weight**

SmartHitch™ 2 Attachment System

4WD, ¾- and 1-Ton Trucks Vehicle Application

9'2" XT

Steel | Poly | Stainless

- Straight-Blade Width | Curb Guard Width* 110" | 114"
- V-Position Blade Width | Curb Guard Width* 99" | 100"
- Scoop-Position Blade Width | Curb Guard Width* 92" | 103"
- 30" center; 38" ends Blade Height
- 842 lbs* | 852 lbs* | 882 lbs* Plow Weight**

SmartHitch™ 2 Attachment System

4WD, ¾- and 1-Ton Trucks Vehicle Application

10 *Maximum product width. **Plow weight does not include vehicle mount weight. †Vehicle mount weight range: 75-105 lbs.



SEE IT IN ACTION



EXT

Expandable Pitched-Forward Power.

Standard Features

- SmartLight™ 3 LED Headlight System
- Reinforced Moldboard
- Heavy-Duty Push Frame and Attachment Bar
- Expandable, Fully Hydraulic Pitched-Forward Wings
- Open-Back Design
- ½" x 6" AR450 Cutting Edge
- 1½" 60-Durometer Urethane Wing Cutting Edges
- Blade Shock Absorber

Optional Accessories

- Snow Deflector
- Cast-Iron Plow Shoes
- Caster Wheels
- BOSS Joystick Controller

Product Specs

8' RETRACTED 10' EXTENDED

Steel

- Blade Width (Retracted) 96"
- Blade Width (Extended) 120"
- Blade Height 30"
- 970 lbs* Plow Weight*

SmartHitch™ 2 Attachment System

4WD, ¾- and 1-Ton Trucks Vehicle Application

11 *Plow weight does not include vehicle mount weight. †Vehicle mount weight range: 75-105 lbs.